

CN100B CAP NAILER



The CN100B is the premier pneumatic cap nailing innovation. When you need to quickly and safely lay down underlayment, this is the tool for you. And with a fastener capacity of 200 caps and nails, reloading is easy and efficient—another time-saver!

Tool Weight: 4.9lbs

Speed: 5 cap nails per second
(max cycle rate/second)

Fastener Capacity: 200 caps & 200 nails

Cap Type: Full 1 in. collated plastic caps

Fastener Type: Full round head; EG or 304

Stainless Steel ring shank nails

Fastener Length: 1 in. x .083

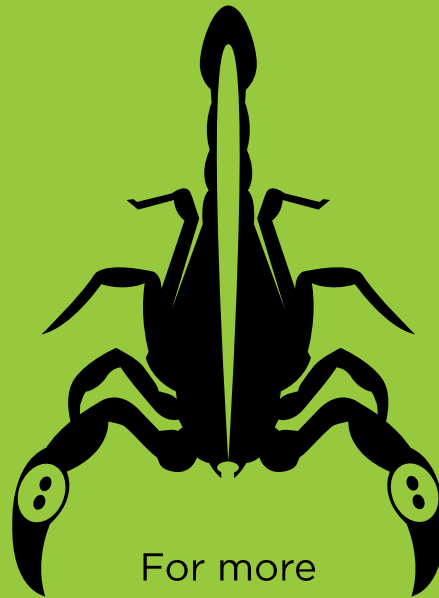


The CN100B is for exclusive use with STINGER NailPac®

2000 Ct. NailPac includes 10 rolls of 200 1 in. plastic collated caps, 10 coils of 200 1 in. ring shank nails

Wind resistant up to 150mph

Meets ASTM F1667 and the standard requirements of a FORTIFIED Roof™



For more information, call
800-968-6245

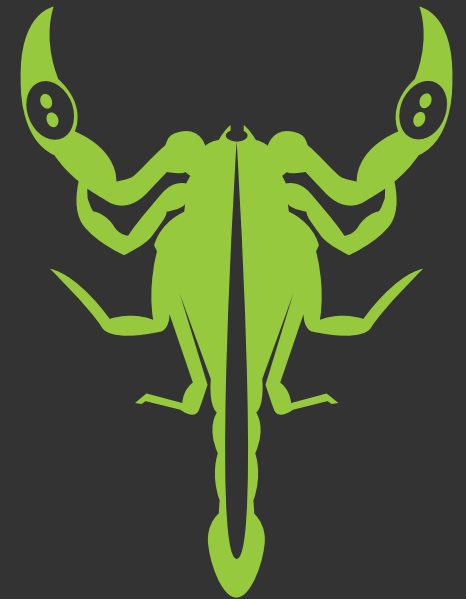
or

616-538-8000

to speak with a STINGER product expert.

STINGER®

PK180CAN
REV. 04/21/22



STINGER®

**BEST PRACTICE INSTALLATION.
BETTER PROTECTED HOMES.**

Cap staples or cap nails, pneumatic or non-pneumatic tools, collated or hand drive, STINGER innovations provide complete roofing and sidewall fastening solutions to protect homes from the elements.



STINGERWORLD.COM

CS150B CAP STAPLER



18ga
STAPLES

The CS150B provides builders with proven performance and best practice for securing synthetic underlayment, as well as roofing felt, foamboard, and housewrap.

- Tool Weight:** 4.2lbs
- Speed:** 5 cap staples per second (max cycle rate/second)
- Fastener Capacity:** 200 caps & 200 staples
- Cap Type:** Full 1 in. collated plastic caps
- Fastener Type:** 7/16 in. crown staples; 18ga
- Fastener Length:** 5/8 in., 7/8 in., 1-1/4 in. & 1-1/2 in.



MEETS ASTM F1667 REQUIREMENTS

The CS150B is for exclusive use with STINGER StaplePac®

2000 Ct. StaplePac includes 10 rolls of 200 1 in. plastic collated caps, 20 strips of 100 staples.

CAP HAMMERS



CH38A CAP HAMMER

- Tool Weight:** 2.9lbs
- Fastener Capacity:** 168 caps & 168 staples
- Cap Type:** Full 1 in. collated plastic caps
- Fastener Type:** 3/8 in. crown staples
- Fastener Length:** 3/8 in.



CH38-2 CAP HAMMER



- Tool Weight:** 2.6lbs
- Fastener Capacity:** 168 caps & 168 staples
- Cap Type:** Full 1 in. collated plastic caps
- Fastener Type:** 3/8 in. crown staples
- Fastener Length:** 3/8 in.



MEETS ASTM F1667 REQUIREMENTS

STINGER Cap Hammers are for exclusive use with STINGER 3/8 in. StaplePac

2016 Ct. StaplePac includes 12 rolls of 168 1 in. plastic collated caps, 24 strips of 84 3/8 in. staples