



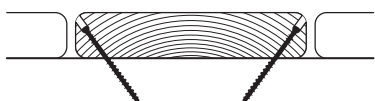
CAMO Edge Fastening

Traditional Fastening

BUILDING YOUR DECK BETTER WITH CAMO®

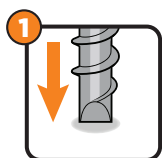
You're investing in a quality deck and you want it to last. That's why we use the CAMO Edge fastening technology to ensure your deck gets installed to the highest standard.

PICTURE PERFECT DECK



A move up from face screws, CAMO Edge Screws deliver a high-end look at an affordable price. Edge screws are installed through the side of the deck board leaving a beautiful, fastener-free surface.

QUALITY INSTALLATION



1 Eliminates pre-drilling.



2 Reduces splitting and cracking.



3 Augers out material while driving.

The Edge Screws we use feature a patented rake tip that augers material out as they're driven, reducing the potential for board splitting and cracking. The reverse upper thread draws the board tight creating a solid v-lock connection into the joist, reducing lateral movement to maximize holding power.

FASTER INSTALL

Designed for exclusive use with the CAMO DRIVE Tool on square decking, collated Edge Screws are installed while standing up. This helps us install your deck up to 5X faster - so you can start enjoying your deck sooner.



CAMO tools and compatible fasteners are backed by a **CAMO Warranty** for use with leading deck boards.

Read the full warranty at camofasteners.com



Contractor Email Here
(000) 000-0000